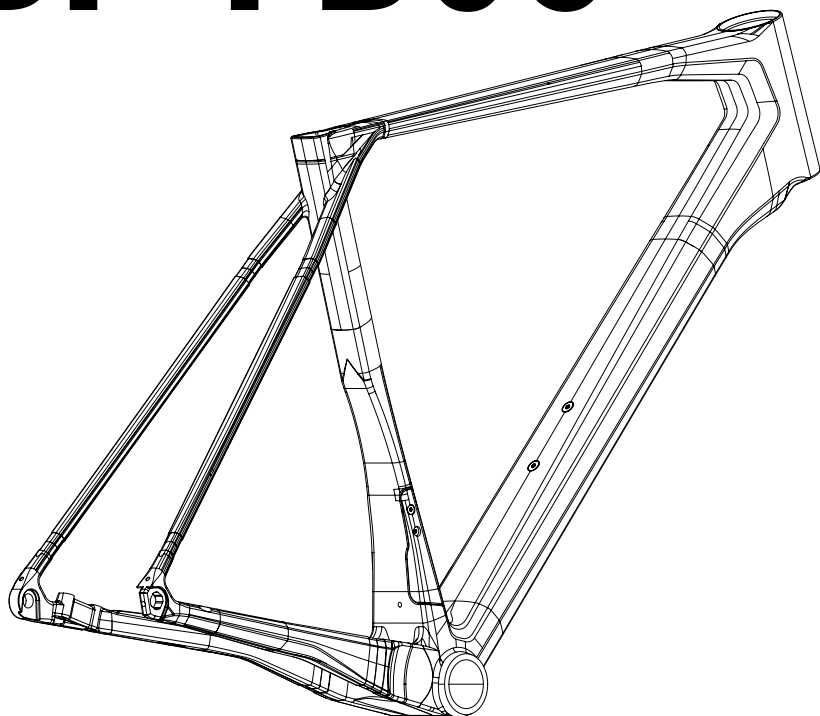


# **SERVICE MANUAL SUPERIOR BF-FB05**



# SERVICE MANUAL SUPERIOR

Superior would like to congratulate you on the purchase of your new bicycle. We place great emphasis on the choice of materials and their processing so as to ensure the highest quality of our products, a long service life and great functionality.

The Operating Manual contains and specifies certain rules that should be followed if you want to enjoy your high-quality Superior product for many years to come. You have received the Operating Manual with your bike.

Superior supplies high-quality bicycles exclusively for specialized shops. These products are already partially pre-assembled.

The final assembly of a bike for riding can only be carried out by an authorized Superior dealer. This particularly applies to the basic configuration of suspension components, the front and back derailleurs and braking systems. This will ensure maximum safety when using the product.



## WARNING

### **WARNINGS RELATED TO MECHANICAL WORK**

*Specialized skills and tools are required to configure and tune the bike. These tasks should only be carried out by employees at an authorized service station. Riding a bike which has not been correctly configured and assembled can be dangerous. Even a seemingly trivial deficiency, such as a loose screw, can cause a crucial part to break over time and the loss of control of the bike, leading to an accident. Therefore, we recommend that you leave any repairs and maintenance for your bicycle to an authorized service centre. Your safety depends on the correct maintenance of the bike. Employees of authorized service stations have special qualifications and know-how.*



## WARNING

*Any adjustments and modifications can lead to the frame, fork or other parts becoming unsafe. The use of an unapproved component or the incorrect assembly of parts can lead to excessive wear and tear of the bike or its parts. Adjustments to the frame, fork or other components can have a negative impact on the handling of the bike and may lead to a fall. Do not grind off, drill or file any parts, do not remove backup safety elements, do not install incompatible forks and do not make any other similar unauthorized changes. Before you install any accessories on your bicycle, or replace any part, always consult the authorized service center to make sure the particular accessory or part is compatible and safe to use.*

# BIKE CATEGORY

The product has been designed as a category 2 bike.

### **Category 2 Operating Conditions**

- Road and off-road rides, jumps up to 15 cm (6 in.)
- Irregular terrain, with the tires briefly off the ground
- Jumps or drops lower than 15 cm (6 in.)

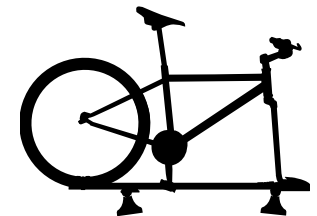


# DAMAGE PREVENTION



## PRECAUTIONS

- Avoid hard, sharp, and pointed objects. Do not lean the bike's top tube against a pole, pillar, or corner of a building.
- When fixing the seat post in a mounting stand, eliminate high lateral loads on the bike, especially while replacing the bottom brackets and cranksets, as such loads may damage the seat post or frame.
- When using a car to transport the bike, use racks and carriers that fix the bike's seat post or front wheel hub rather than the frame.
- The frames are not suitable for stationary bicycles with chain stay fixation: As the wheel is not moving, the hangers have to resist excessive load, and the generated forces may damage the frame.
- Do not mount child seats or carriers.
- When transporting the bike in a box, use soft packaging materials, such as foamed sheets or balls, to ensure sufficient protection; make sure that no foreign objects may press against the frame. Importantly, the warranty does not cover any damage in transport, including but not limited to such incidents as denting or perforation of the frame.
- No frame or carbon components may be exposed to high temperatures, such as those that accompany powder coating and furnace heating to allow paint finish. Similarly, the discussed parts of the bike are prone to being damaged when stored in a car under intense heat of the sun or near other heat generators.



# SERVICE INTERVALS

- Major servicing by an authorized distributor at least once a year or after 200 riding hours (whichever comes first)
- Torque checking before each ride; in the joints between moving components, the predefined torque values are to be strictly observed (see the diagram below).
- Bearing lubrication: not less often than 1× every six months.
- Talk to your authorized distributor to obtain a customized service and maintenance plan that suits your bike and riding preferences. The regular service intervals are mandatory and must not be neglected; conversely, if recommended by the distributor and in cases where the product is in heavy use, the time period between in-service inspections should be reduced and the range of relevant tasks expanded. Such an option applies to, for example, bikes ridden in adverse climate conditions and hard terrain or equipped with special components that need specific maintenance steps and intervals (detailed instructions and advice are available from Superior distributors).



## WARNING

*Any failure to follow the prescribed service tasks or intervals and torque values may result in a loss of warranty rights.*

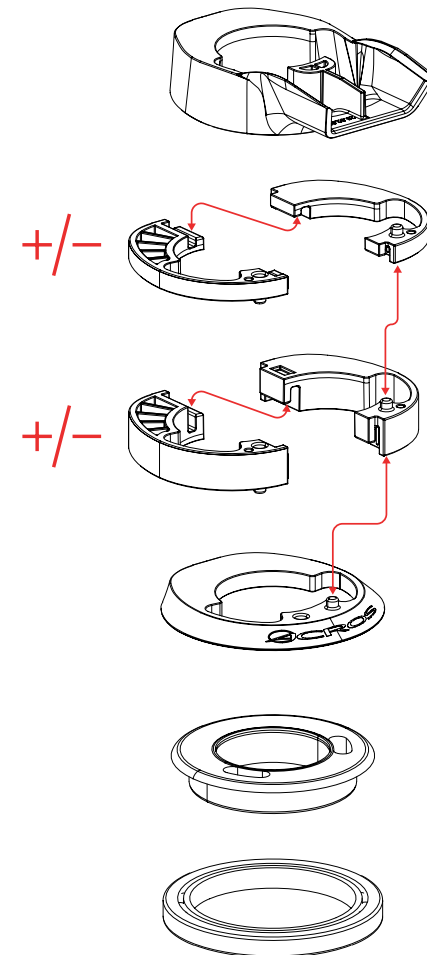
# SERVICE

## REPLACING THE SHIFTER CABLES AND HOSES

The frame has been designed to support fully integrated cable routing, where no disconnection is necessary.

## ADJUSTING THE STEM HEIGHT

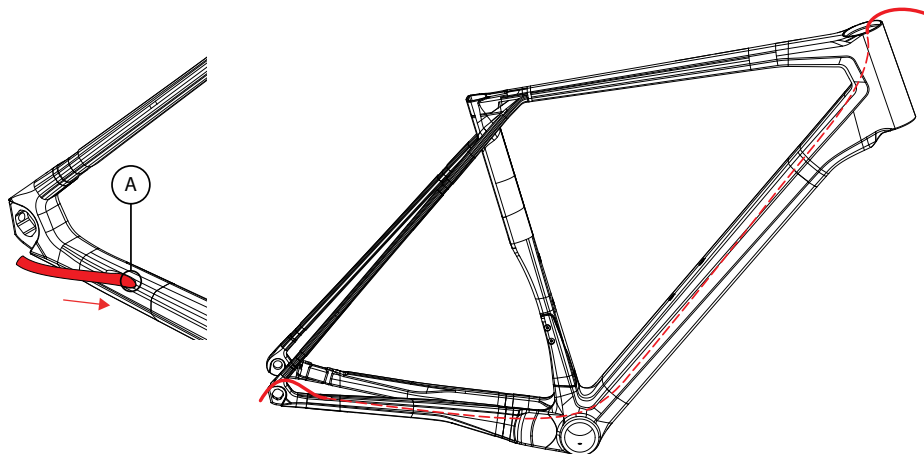
The spacer rings are removable easily, without the need to disconnect the cables and hoses.



# SERVICE

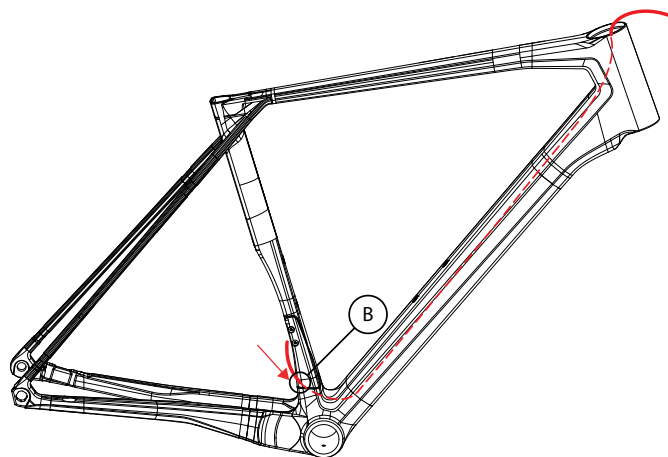
## 1. REPLACING THE REAR DERAILLEUR CABLE

- 1.1 Remove the original cable from the frame routing.
- 1.2 Through the opening **A**, insert the new cable into the frame, leading it out upwards through the head tube.
- 1.3 To prevent knocking inside the frame, wrap the cable in a **Jagwire SFA07A5M** foam sleeve.



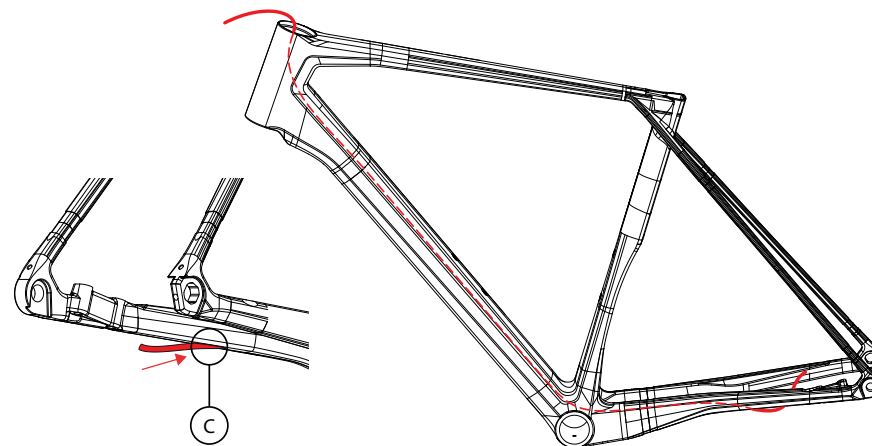
## 2. REPLACING THE FRONT DERAILLEUR CABLE

- 2.1 Remove the original cable from the frame routing.
- 2.2 Through the opening **B**, insert the new cable into the frame, leading it out upwards through the head tube.
- 2.3 To prevent knocking inside the frame, wrap the cable in a **Jagwire SFA07A5M** foam sleeve.



## 3 REPLACING THE REAR BRAKE HYDRAULIC HOSE

- 3.1 Remove the original hose from the frame routing duct.
- 3.2 Through the opening **C**, insert the new hose into the chain stay, leading it out upwards through the head tube.
- 3.3 To prevent knocking inside the frame, wrap the hose in a **Jagwire SFA07A5M** foam sleeve.

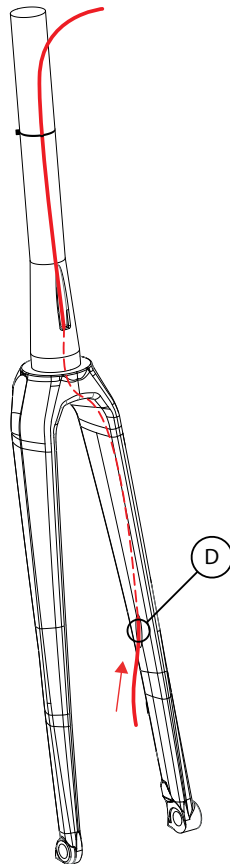


# SERVICE

## 4. REPLACING THE FRONT BRAKE HYDRAULIC HOSE

4.1 Remove the original hose from the fork routing duct.

4.2 Through the opening **C**, insert the new hose into the fork, fixing it to the fork neck with a special **062.0060.00005-178**. strapping tape.



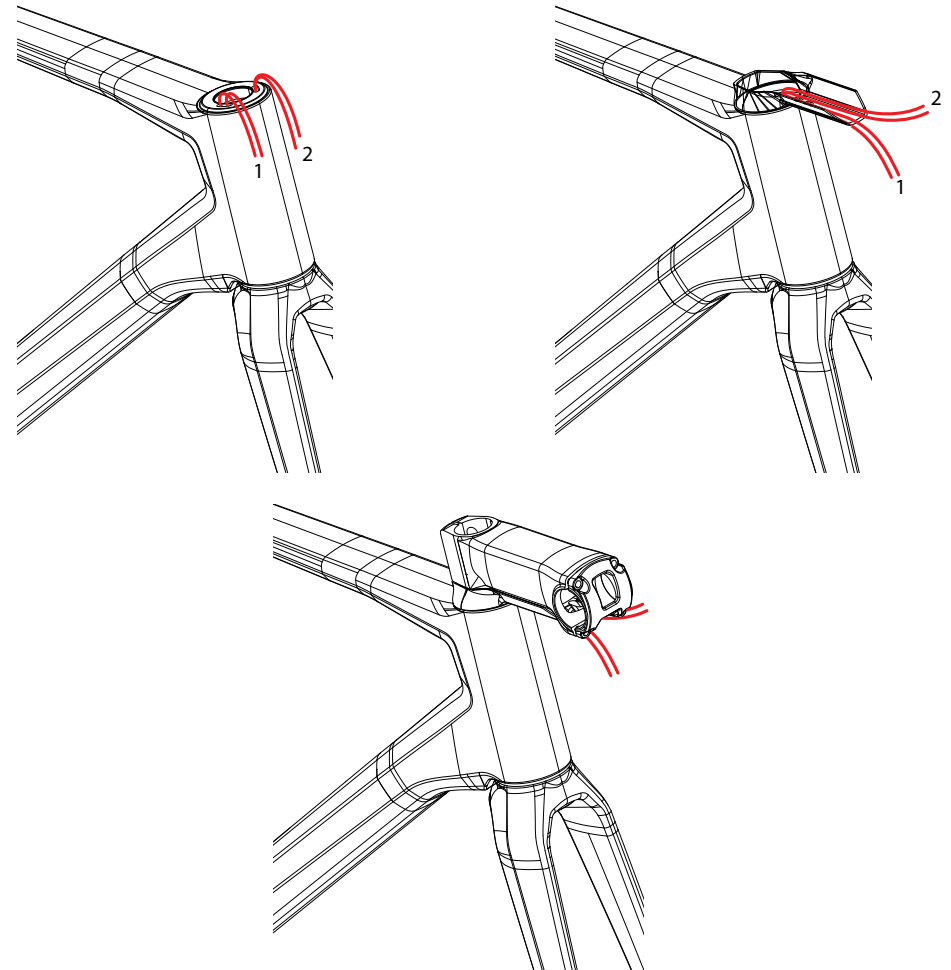
## 5. PUSHING THE CABLES/HOSES THROUGH THE HEADSET

- 5.1 Insert the loose ends of the front brake hydraulic hose and the shifter cable, fitting the fork neck in the headset.
- 5.2 Guide the hose through the opening in the headset cap, ensuring that the upper end of the hose appears on the side of the lever to which it will be connected (opening 1 or 2, depending on the configuration of the bike).
- 5.3 Guide the cable through the opening in the headset cap, ensuring that the upper end of the cable appears on the side of the lever to which it will be connected (opening 1 or 2, depending on the configuration of the bike).
- 5.4 Guide the cable and the hose through the spacer rings and the stem routing; ensure that the upper ends appear at the levers to which they will be connected.



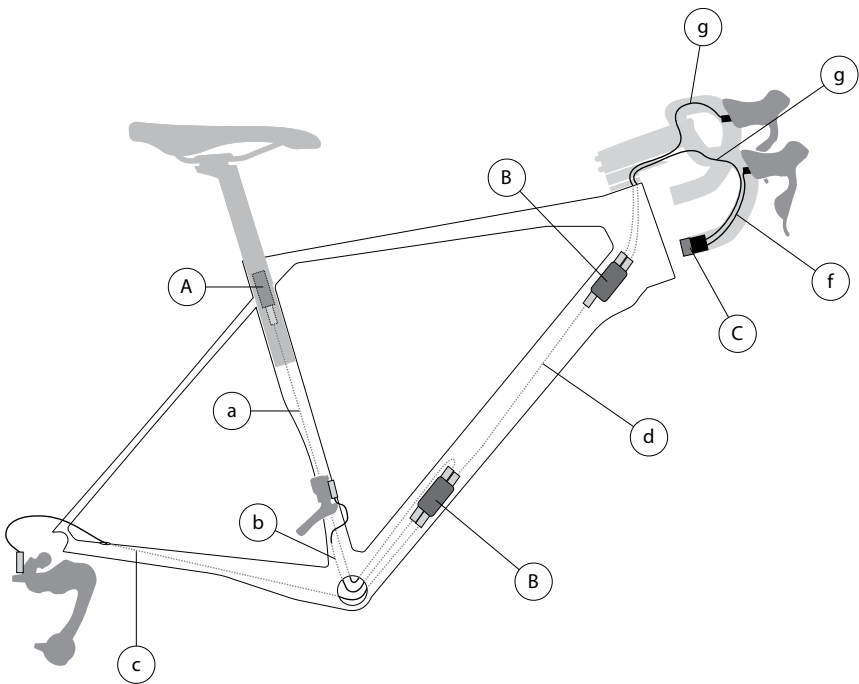
### NOTE

*Some of the bike models feature an electronic control cable instead of the shifter one; in these product versions, the insertion procedure is identical with that used for standard cables.*



# SERVICE

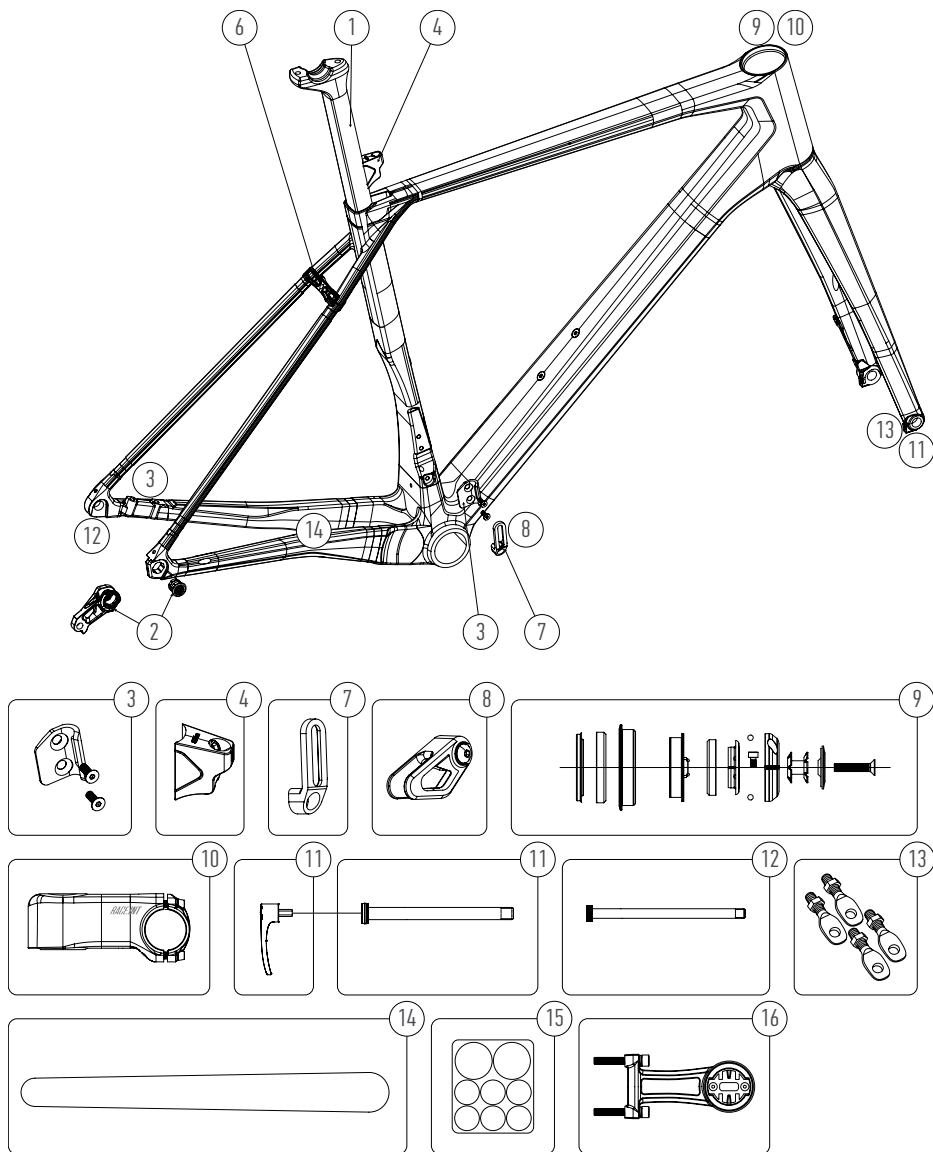
## THE Di2 ELECTRONIC SHIFTER WIRING



- A Battery
- B Junction B
- C EW-RS910 (the control unit integrated in the handlebar tube)

- Cable lengths
- a ≤ 600 mm
  - b ≤ 300 mm
  - c ≤ 750 mm
  - d ≤ 850 mm
  - e ≤ 600 mm
  - f ≤ 300 mm
  - g ≤ 750 mm

COMPATIBILITY		
Disc	Front	max. Ø 160 mm
	Rear	max. Ø 160 mm
Tyre		max. 40 x 622 mm
Chainring	1x	max. number of teeth 53
	2x	max. number of teeth 53 and 36
Crankset	1x	Q factor 151 mm
	2x	Q factor 146 mm
Headset		ACROS 320.52.525 AIX-525, OD56 IS52/28,6 ICR-IS52/40IPS
Bottom Bracket		Pressfit SHIMANO standard 41x92 mm
Seatpost Clamp		integrated
Seatpost		min. insertion 120 mm



ORIGINAL ACCESSORIES		
ART. NO.	ITEM	BFI PRODUCT CODE
1	SEATPOST	079.1995.00003-398
2	DERAILLEUR HANGER	013.0002.00149-398
3	DERAILLEUR HANGER	013.0002.00155-398
4	INTEGRATED SEATPOST CLAMP	013.0018.00003-398
5	DI2 BATTERY MOUNT	013.0017.00024-398
6	X-BRIDGE -MUDGUARDS HANGER	013.0017.00022-398
7	CHAIN GUIDE BRACKET	067.0012.00011-398
8	CHAIN GUIDE	067.0012.00001-196
9	HEADSET	009.1505.00005-389
10	STEM 80 MM	036.2433.00022-196
	STEM 90 MM	036.2453.00101-196
	STEM 100 MM	036.2463.00045-196
	STEM 110 MM	036.2543.00092-196
11	FRONT E-THRU AXLE	059.0008.00038-196
	LEVER	059.0015.00001-196
12	REAR E-THRU AXLE	059.0008.00039-196
13	MUDGUARD ADAPTOR KIT	064.0117.00001-196
14	FRAME PROTECTOR CH/S	087.8000.00003-196
15	FRAME PROTECTOR	087.7000.00009-196
16	GARMIN MOUNT	036.9000.00013-196



#### SMART TIPS

A tubeless tire set will improve the rideability and comfort rate, while also allowing you to prevent punctures.

# #BEFASTER

Superior is a registered trade mark of  
BIKE FUN International

---

Areál Tatry 1445/2  
742 21 Kopřivnice

---

[www.superiorbikes.eu](http://www.superiorbikes.eu)